

Mouse Monoclonal Antibody to ESRRA
Purified Mouse Monoclonal Antibody
Catalog # AO2422a**Specification**

Mouse Monoclonal Antibody to ESRRA - Product Information

Application	WB, FC, E
Primary Accession	P11474
Reactivity	Human
Host	Mouse
Clonality	Monoclonal
Isotype	Mouse IgG1
Calculated MW	45.5kDa KDa

Description

The protein encoded by this gene is a nuclear receptor that is closely related to the estrogen receptor. This protein acts as a site-specific transcription regulator and has been also shown to interact with estrogen and the transcription factor TFIIB by direct protein-protein contact. The binding and regulatory activities of this protein have been demonstrated in the regulation of a variety of genes including lactoferrin, osteopontin, medium-chain acyl coenzyme A dehydrogenase (MCAD) and thyroid hormone receptor genes. A processed pseudogene of ESRRA is located on chromosome 13q12.1. Alternatively spliced transcript variants have been found for this gene.;

Immunogen

Purified recombinant fragment of human ESRRA (AA: 198-376) expressed in E. Coli.

Formulation

Purified antibody in PBS with 0.05% sodium azide

Application Note

ELISA: 1/10000; WB: 1/500 - 1/2000; FCM: 1/200 - 1/400

Mouse Monoclonal Antibody to ESRRA - Additional Information

Gene ID 2101

Other Names

ERR1; ERRa; ESRL1; NR3B1; ERRalpha

Dilution

WB~~1:1000
FC~~1:10~50
E~~N/A

Storage

Maintain refrigerated at 2-8°C for up to 6 months. For long term storage store at -20°C in small aliquots to prevent freeze-thaw cycles.

Precautions

Mouse Monoclonal Antibody to ESRRA is for research use only and not for use in diagnostic or

therapeutic procedures.

Mouse Monoclonal Antibody to ESRRA - Protein Information

Name ESRRA

Synonyms ERR1, ESRL1, NR3B1

Function

Binds to an ERR-alpha response element (ERRE) containing a single consensus half-site, 5'-TNAAGGTCA-3'. Can bind to the medium- chain acyl coenzyme A dehydrogenase (MCAD) response element NRRE-1 and may act as an important regulator of MCAD promoter. Binds to the C1 region of the lactoferrin gene promoter. Requires dimerization and the coactivator, PGC-1A, for full activity. The ERRalpha/PGC1alpha complex is a regulator of energy metabolism. Induces the expression of PERM1 in the skeletal muscle.

Cellular Location

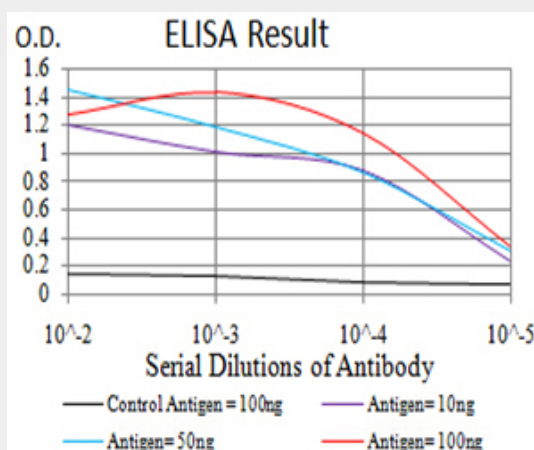
Nucleus {ECO:0000255|PROSITE-ProRule:PRU00407, ECO:0000269|PubMed:18063693, ECO:0000269|PubMed:21190936}. Cytoplasm. Note=Co-localizes to the cytoplasm only in presence of MAPK15.

Mouse Monoclonal Antibody to ESRRA - Protocols

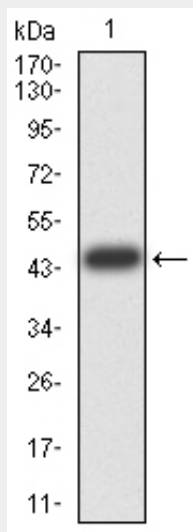
Provided below are standard protocols that you may find useful for product applications.

- [Western Blot](#)
- [Blocking Peptides](#)
- [Dot Blot](#)
- [Immunohistochemistry](#)
- [Immunofluorescence](#)
- [Immunoprecipitation](#)
- [Flow Cytometry](#)
- [Cell Culture](#)

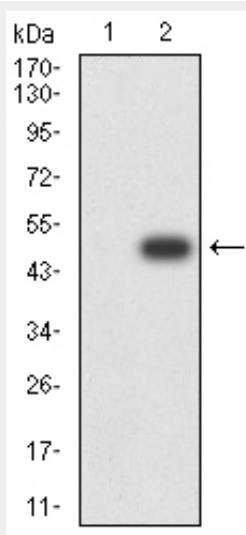
Mouse Monoclonal Antibody to ESRRA - Images



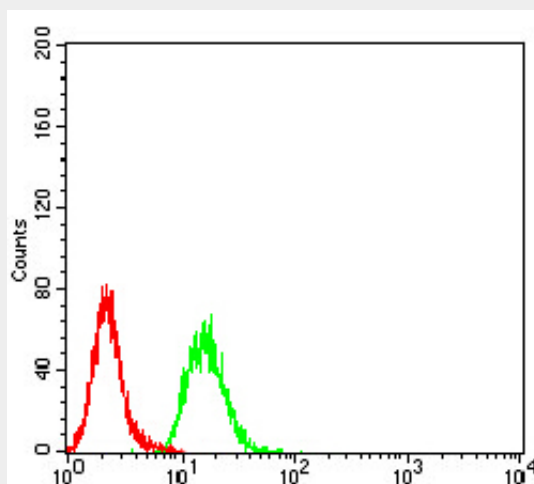
Black line: Control Antigen (100 ng); Purple line: Antigen (10ng); Blue line: Antigen (50 ng); Red line: Antigen (100 ng)



Western blot analysis using ESRRA mAb against human ESRRA (AA: 198-376) recombinant protein. (Expected MW is 45.3 kDa)



Western blot analysis using ESRRA mAb against HEK293 (1) and ESRRA (AA: 198-376)-hIgGFc transfected HEK293 (2) cell lysate.



Flow cytometric analysis of Hela cells using ESRRA mouse mAb (green) and negative control

(red).

Mouse Monoclonal Antibody to ESRRA - References

1.J Huazhong Univ Sci Technolog Med Sci. 2014 Dec;34(6):875-81. ; 2.Mol Ther. 2014 Apr;22(4):743-51. ;